

Project has moved N/S or E/W.

Symptoms:

When you return to an existing job the map is no longer aligned with the position of the tractor. The project surface has moved North/South or East/West.

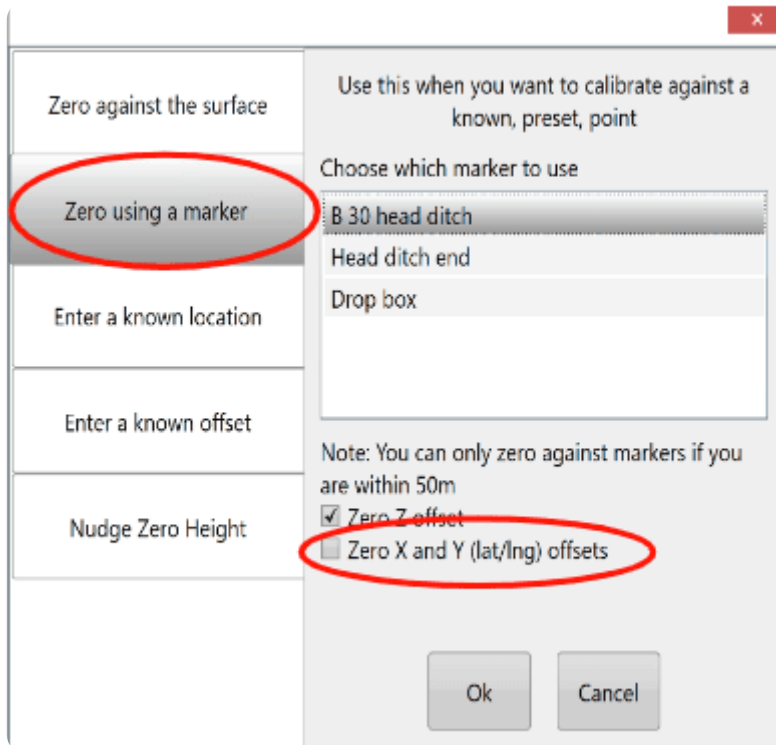
Cause:

- **Previously entered offsets have been cleared under the Machine tab in settings.**
- **The Base station has been moved.**
- **The Base station is configured as a Quick survey and has been power cycled or reset.**

Solution:

1. **Keep a record of any horizontal offsets you have used for a project in case you need to re-enter them. If you look back in the project 'activity log' you may be able to find previously entered ones there (depending on version).**
2. **Always use a Base configured as 'Absolute Base' where possible**
3. **Reference any newly established base station from a "dealer network" or permanent base network where possible**

4. **If using a 'Quick Survey' have it connected to a permanent and always-on power source for the entire duration of a job.**
5. **Never move a Base station position during a job.**
6. **Establish permanent "benchmark" locations to check against and re-align the job. You can use the regular 'Zero' button in the implementation screen for this.**



7. **Use T3RRA software offsets to re-align the map.**