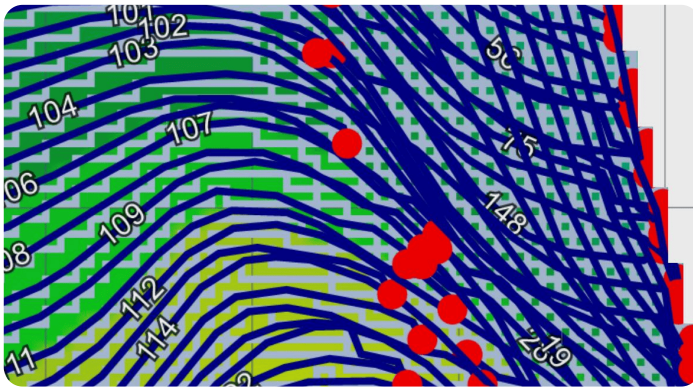


Levees are jumbled and crossing over.

Symptoms:

When you create levees in T3RRA Cutta, Ditch or Levee, the levee lines seem very ‘messy’. There are frequent line endings and levee paths sometimes appear to cross over each other



Cause:

The levees are spaced very closely. T3RRA software uses an algorithm that looks at the edges of individual raster pixels and problems can occur if the levee lines are spaced at a width of equal to, or less than, the pixel size.

Solution:

Resurface the survey data at a smaller pixel size. Then re-do the levees. The correct pixel size will depend on the slope of the land, and the required vertical distance between levees.

