

Imported SWP+ ditch track names are too long.

Symptoms:

After importing SWP+ ditch tracks, you see that their assigned names are too long and cover most of the surface.

Cause:

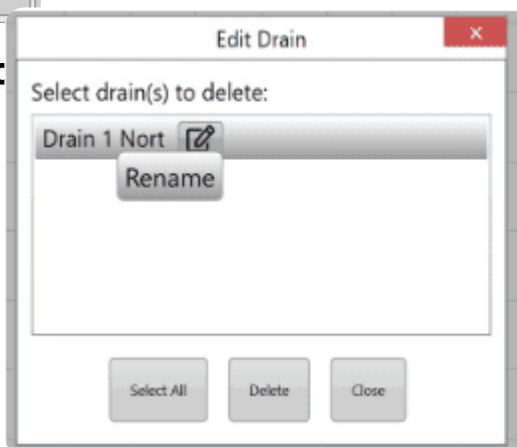
Previously assigned names are imported along with ditch tracks.

Solutions:

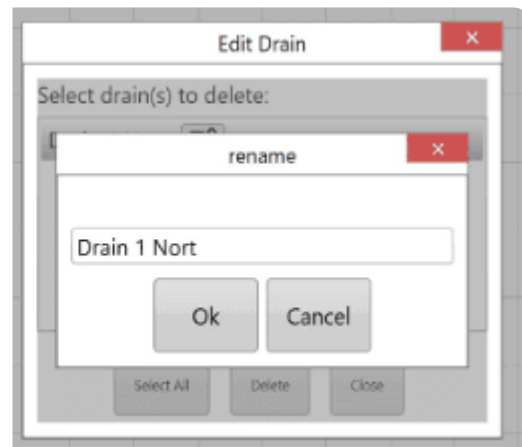
Return to the Surface step and use the Edit Drains button to rename.



Click on



Close.



Ok, then

