

Drain Design freezing and/or producing jagged profile view
OR Small Field design has jagged edge and difficult to see changes in elevation.

Symptoms:

After Applying drain design, the tablet freezes.

Profile view of drain is jagged.

Small field design has jagged edges.

Small field not defined enough.

When I am in the Drains Design step, the profile view of my surveyed drain appears 'jagged' and 'corrupt'. I know what I am viewing in the drain profile window is not an accurate representation of the original surface.

Possible causes:

Pixel size is too large for thin drain.

Drain is long and the drain width is thin.

A drain survey was collected OVER a field survey (or visa versa).

Solutions:

Change Pixel size.

Change width of drain (only if the change will not affect implementation).

Image of profile view of drain with jagged drain line:

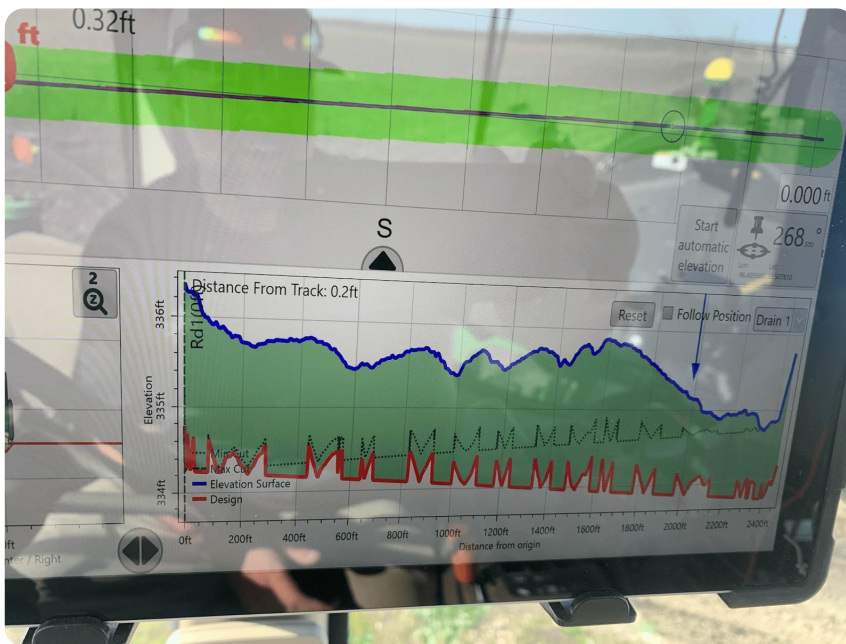


Image of small field with large pixel size:

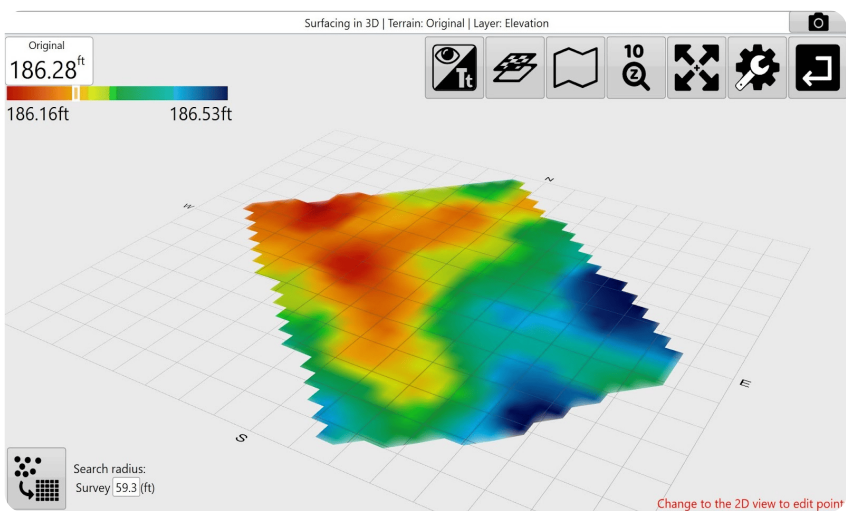
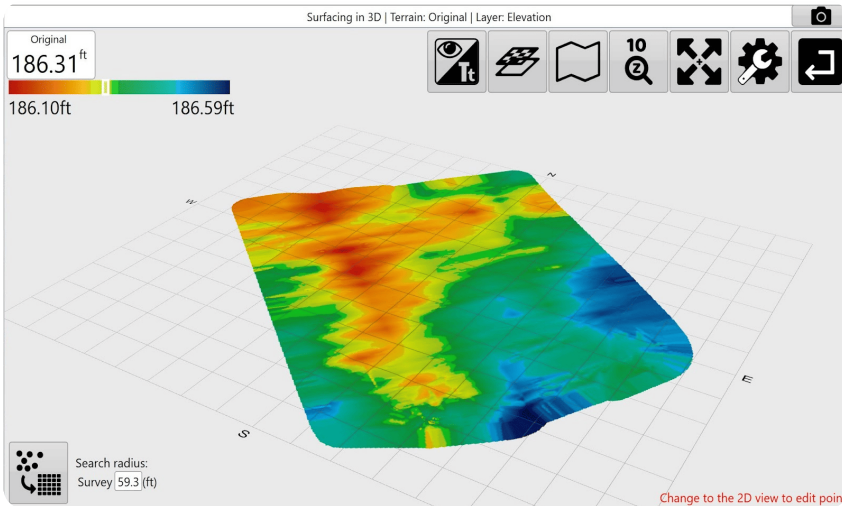


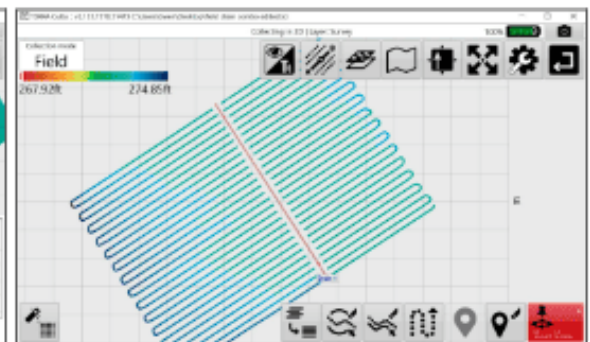
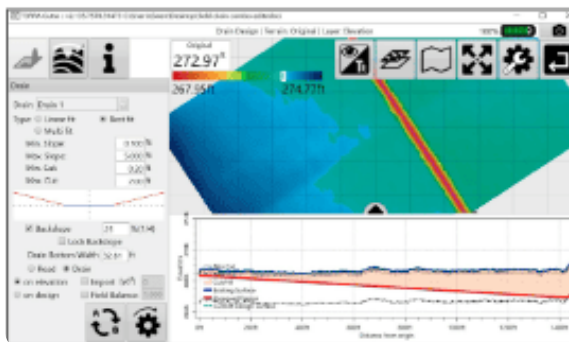
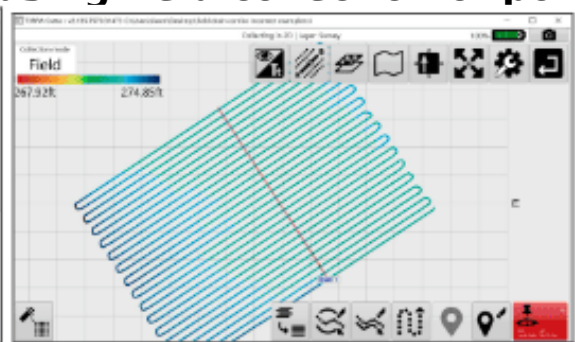
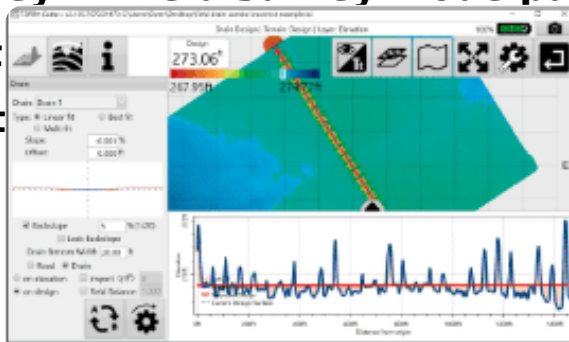
Image of small field with small pixel size:



Solutions if drain and field surveys overlap:

Delete the field elevation points directly under the drain path of drain surveyed points.

Resurvey in Field survey mode pausing field collection of points when the mode t



points.