

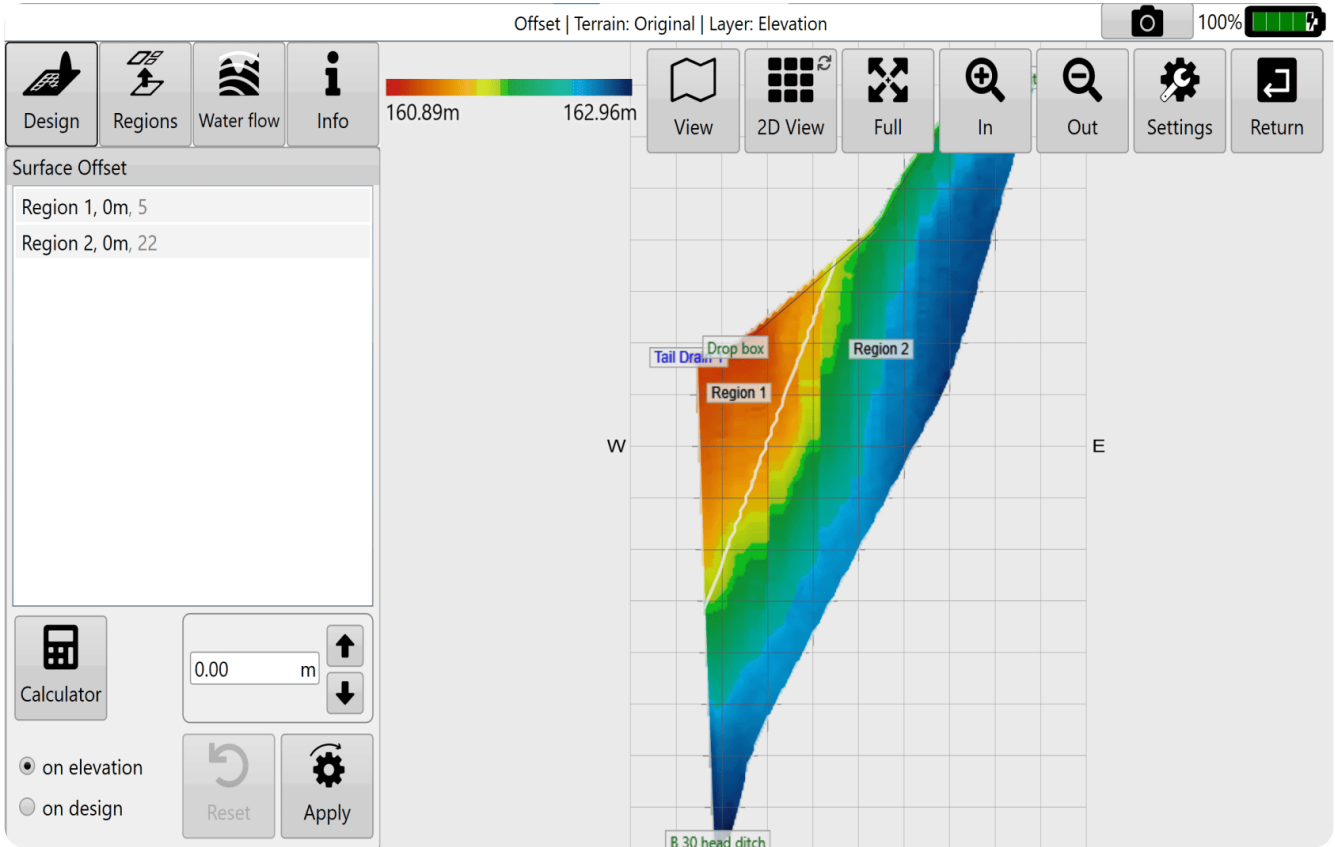
Offset Design

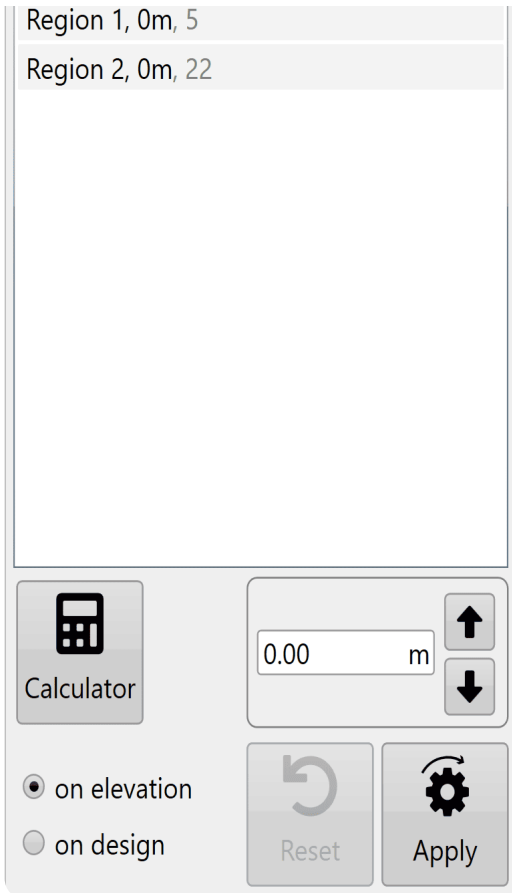


Select the 'Offset' button to raise or lower the surface

height of a field or region. This can help with:

- **Importing and exporting dirt**
- **Addition or removal of topsoil**
- **Raising pads**

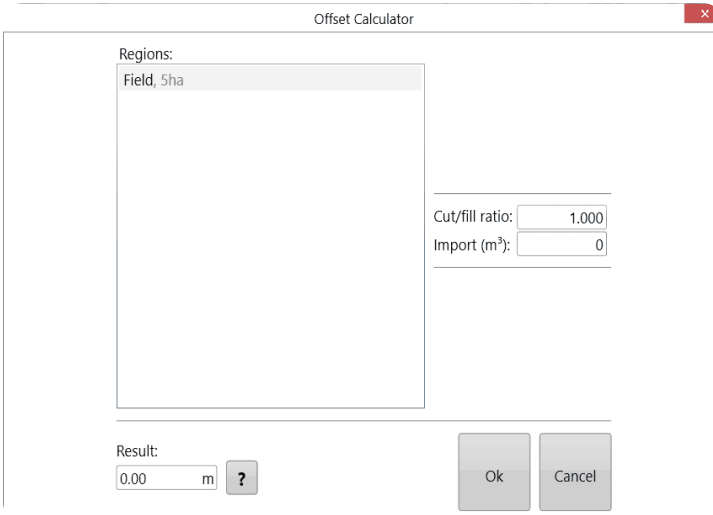




The screenshot shows a software interface with a list of regions at the top: "Region 1, 0m, 5" and "Region 2, 0m, 22". Below the list is a control panel. On the left is a "Calculator" button with a calculator icon. In the center is a text input field containing "0.00" followed by "m", with up and down arrow buttons to its right. Below the input field are two radio buttons: "on elevation" (selected) and "on design". To the right of the radio buttons are "Reset" and "Apply" buttons, each with a corresponding icon (a circular arrow and a gear).

You can either:

- **Manually enter the desired offset amount (This can also be adjusted in set increments using the arrow buttons).**
- **Use the calculator to adjust the offset amount. The calculator is useful if you want to offset the surface by a certain volume of imported or exported dirt.**
 - **Formular (Click '?' button to see)**
Left over volume = (Cut/Fill ratio * Volumn of cut) + Volume of fill.
Result = (Import + Left over volume) / Selected area



Offset Calculator

Regions:

Field, 5ha

Cut/fill ratio: 1.000

Import (m³): 0

Result: 0.00 m ?

Ok Cancel

Negative import values are considered exports.

Press 'Apply' (shown as the offset design icon) after parameters are entered.

Once you are happy with the design follow the steps in the '[completing your design](#)' section.