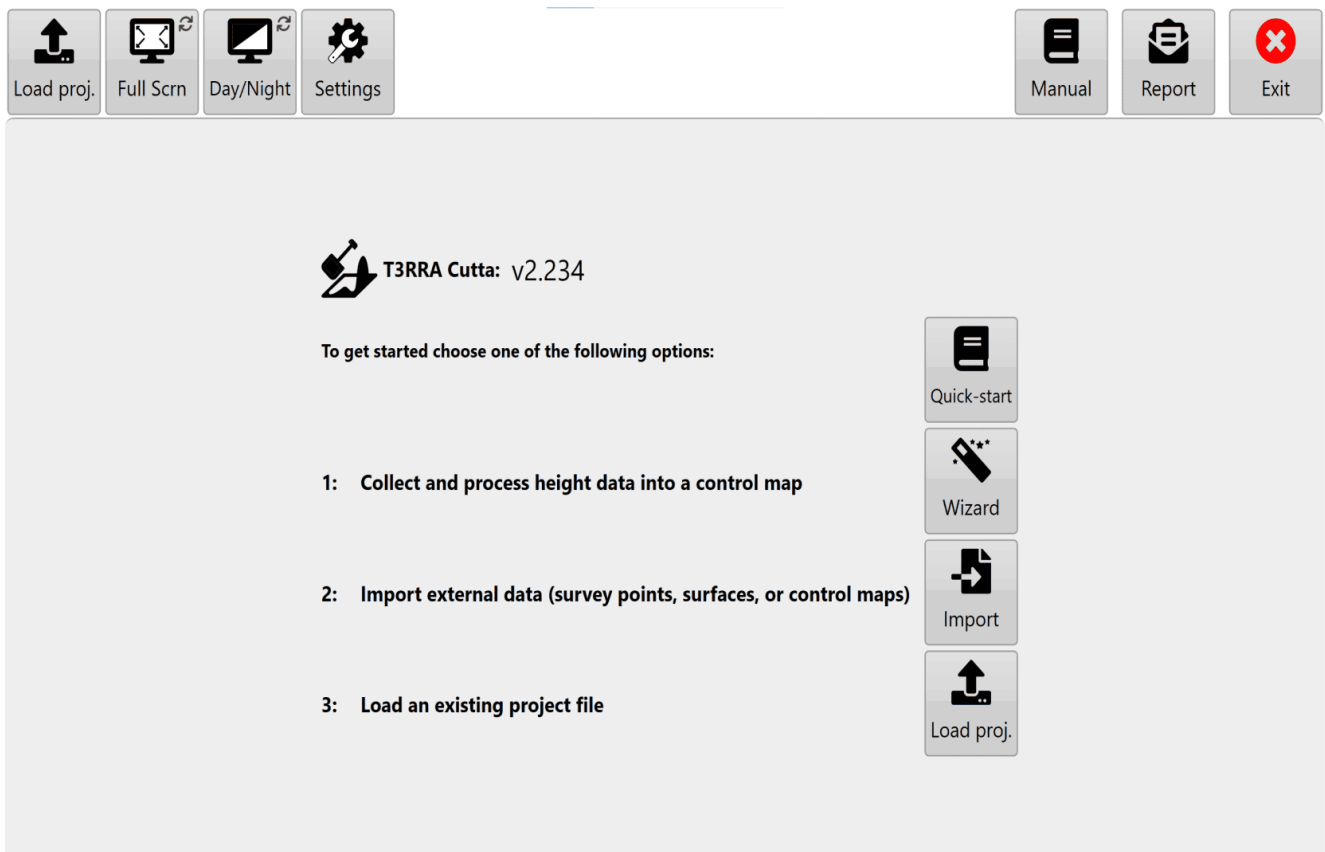


# Main page/ New Project page

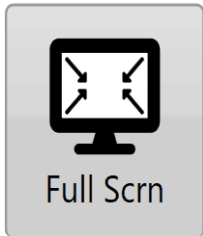
**When T3RRA software is first opened this will be the first screen you see, this screen is also what you will be directed to when you press the 'New Project' button on a Wizard page (discussed in the Wizard section).**



## Points to note

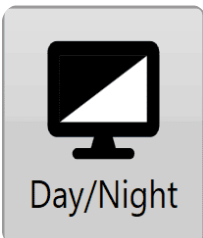
- The file name currently loaded will be displayed at the top of the screen if you are not using 'Full Screen' mode.**

- **The name of the software (T3RRA Cutta, T3RRA Ditch, T3RRA Plane, or T3RRA Survey) will be displayed.**
- **The version (v2.99 above) will be displayed.**



**Full Scrn - this option allows you to switch T3RRA**

**software between full screen mode or windowed mode. This is helpful if you need to be looking at other pages on the tablet at the same time as using the T3RRA software. If a keyboard is attached you can use the shortcut of F11.**



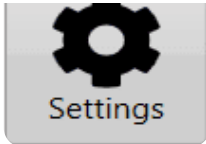
**Day, Night, & High Contrast modes - These are different**

**variations of displaying the screen.**

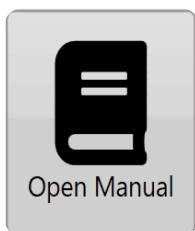
**Day mode (1): classic white (the mode used in the manual).**

**High Contrast (2): inverts the colours of classic white.**

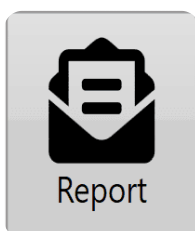
**Night mode (3): Has a black background and a green foreground.**



**Settings - After the T3RRA software has started the first step is to confirm the correctness of your software configuration. The different settings and how they operate will be covered in the next section.**



**Open Manual - The 'Open Manual' button will download a digital copy of the manual and install it on your device. After the manual has been downloaded, pressing the same button will open the manual.**



**Report - The report button opens up a bug report/feature request window (shown below) allowing you to report issues to T3RRA. The name and email address fields of this window are automatically filled using the details linked to the software licence. You must be connected to the internet for this to work.**

