

Application Tab


Settings

Application
Machine
Project
Limits
GPS
Advanced
Dozer


Language: English ▼


Units:

Length: Meters ▼ Area: Hectares ▼ Volume: CubicMeters ▼

Estimated Cost: off / m³ 

Surface Grid Lock grid size to (0 is auto): 0 m

Cut/Fill Color Style  Red/Green/Blue ▼

Surface Color Style(Low,High)  Blue low, Red high ▼

Zero cut/fill range 0.02 m

Slope Display Percentage ▼


Buttons
Input options
Behavior
Setup


Show Zoom buttons

Big buttons


Show Project Swapper button


Transparent button background

 Download updates

 Show update log

v2.328

 Get Support

 Close

Custom currency

Set format to display:

Use custom format

Before:

After:

Decimals:

Example: \$1,234.56+tax

Apply Cancel

Units:

'Language' - Changes the language

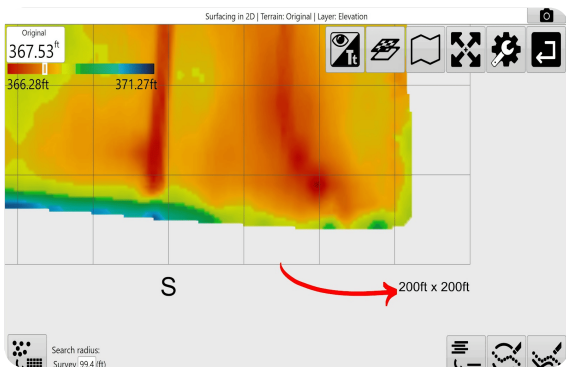
'Length' - Changes unit of distance measurement.

'Area' - Changes unit of area measurement.

'Volume' - Changes unit of volume measurement.

'Estimated Cost' - Set an estimated cost per volume of dirt moved. To customize the currency format, click the button to the right. You can enter custom text before and after the amount. An example is shown on the right. This allows you to put your currency code and other information before and/or after the value.

Cost per cubic meter, or cubic yard (this is calculated for cuts only).



‘Surface Grid’ - Determines whether or not to show the grid lines on the map. By default the grid changes size to best fit the size of the field. Dimensions for the grid size are displayed in the lower right corner of the scanned area.

‘Lock grid size to:’ - Users can adjust grid size manually. set to 0 for auto-size.

‘Cut/Fill Color Style’ - Set colors used for Cut/Fill to Magenta/Green or Red/Green/Blue. (Magenta as cuts/Green as fills, or Red as cuts/Green as neutral/Blue as fills)

‘Surface Color Style (Low,High)’ - The surface color style allows you to change which colors represent your highs and lows. (this is limited to selecting from a drop down menu)

‘Zero Cut/Fill Range’ - Adjusting this number allows you to set a vertical range that will be considered as “on-grade”. This is a great tool for quickly identifying parts of a field with heavy earth

moving. This option will not change the design height or the height of the scraper blade.

'Slope Display' - Show slope as a *Percentage* or as a *Ratio*. (0.1% or 1/1000)

Buttons:

'Show zoom buttons' - Choose to use zoom buttons for zooming in and out instead of 'two-finger touch zoom'.

'Big buttons' - Check this option to increase the size of the menu buttons.

'Show Project Swapper button' - Choose to display the project swapper button.

'Transparent button background' - This setting will change the button backgrounds between gray and transparent when in design or implementation screens.

Input options:

'Show screen keyboard' - Choose to have the keyboard automatically open when needed.

'Show Calculator' - Choose to display a calculator when inputting values when needed.

Behaviour:

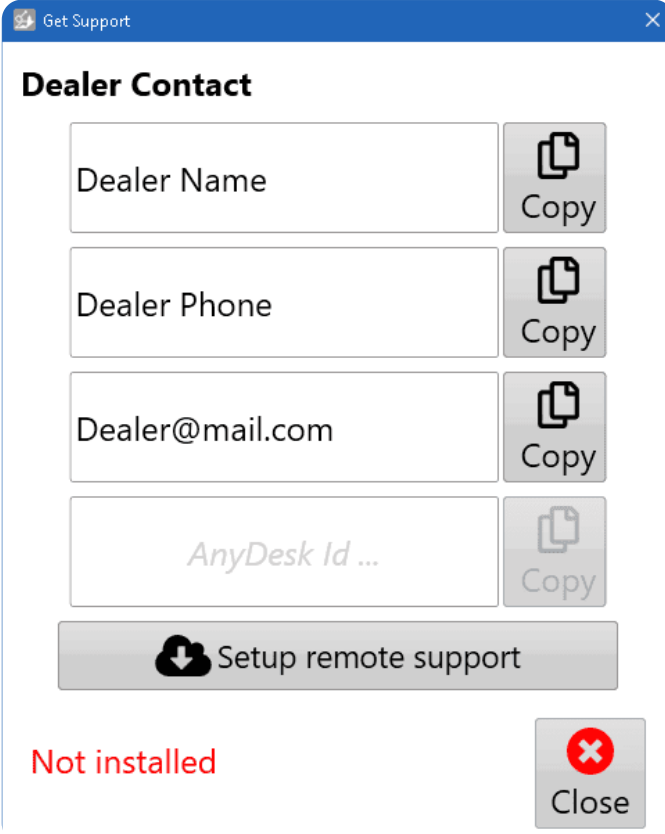
'Hide buttons after delay' - If checked buttons will fade after 15 seconds on the implementation screen. Touch screen to retrieve.

'Collection Beep' - Choose to enable audible notifications of collection of elevation points.

Download Updates - Choose to update to the latest version when connected to the internet.

Show update log - Lists software update details.

Set Support - helps your dealer give you remote support. You must be connected to the Internet for this to work.



Get Support

Dealer Contact

Dealer Name Copy

Dealer Phone Copy

Dealer@mail.com Copy

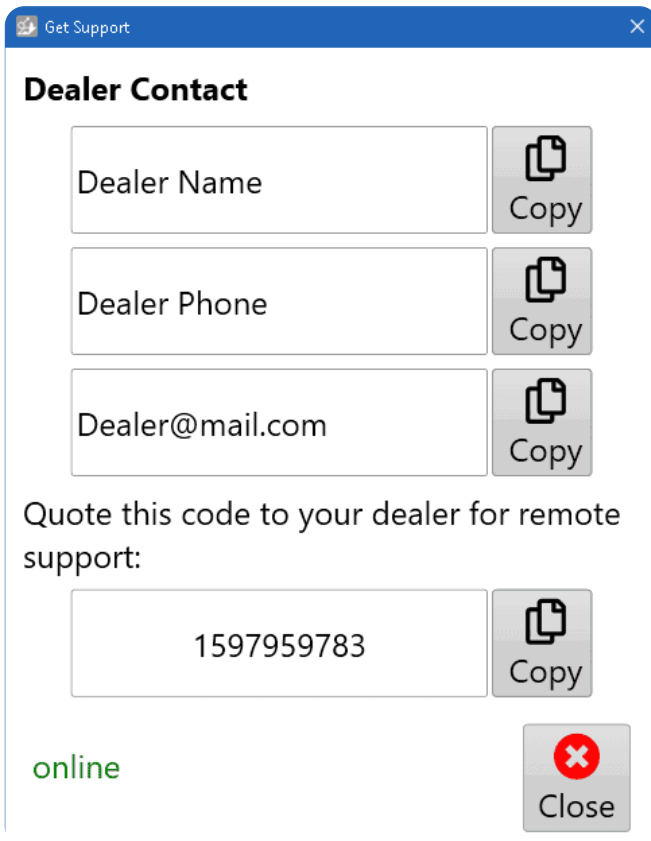
AnyDesk Id ... Copy

Setup remote support

Not installed

Close

Click "Setup remote support" button.



Dealer Contact

Dealer Name

Dealer Phone

Dealer@mail.com

Quote this code to your dealer for remote support:

online

After installation, It will show a code. Your support person can use the code to connect to your computer and help get you going again. When they do, AnyDesk will open a confirmation window. Click the green [Accept] button to accept their help.

Close - Choose to save settings and exit this settings dialog.