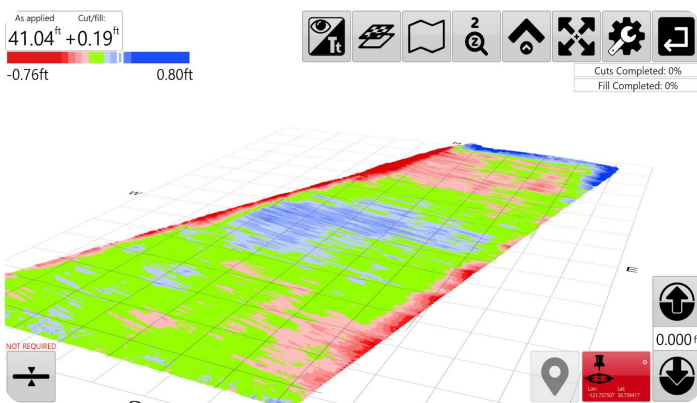
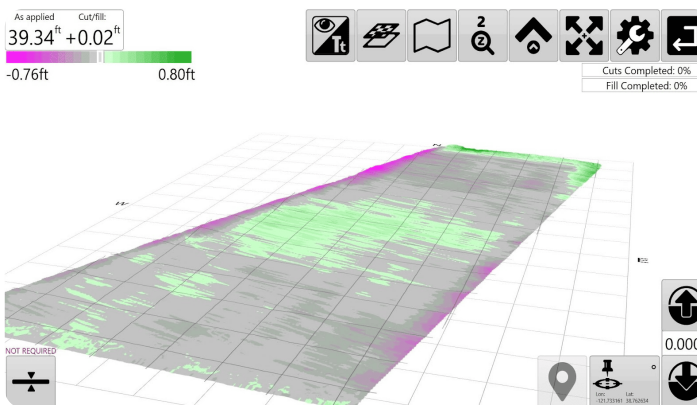


8. Map Display

When implementing the display will show a cut/fill map by default. The Cut/fill map will be displayed using the color settings you have set in the 'Settings > Application' window.



Red/Green/Blue



Magenta/Green (default color setting)

The Magenta/Green color scheme may be easier to view for those users with red/green color blindness. The Red/Green/Blue color scheme may be preferred by users wanting a clearer delineation of “on grade” areas.
