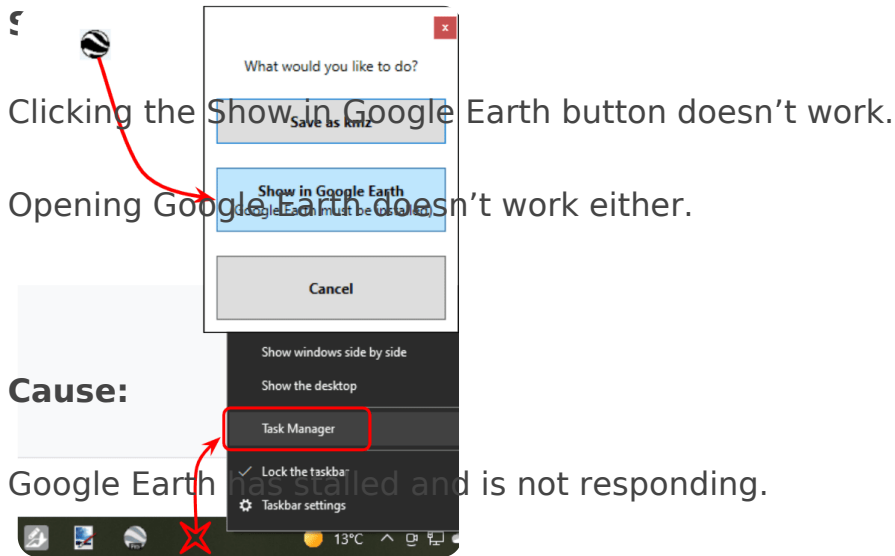


View in Google Earth, does not open



Solutions:

Restart your computer.

To avoid having to restart your computer, open Task Manager by right-clicking a blank part of the taskbar (usually at the bottom of the screen) and selecting Task Manager.

Then, under the Processes tab, right-click on Google Earth and choose End task. Then Google Earth should start up successfully the next time you try.

