

Exporting

- [Printing to PDF - Logo is upside down](#)
- [Export to *.gps control file does not load/display properly](#)
- [View in Google Earth, does not open](#)
- [Export to *.gps control file is too far from benchmark](#)

Printing to PDF - Logo is upside down

Symptoms:

The logo is upside down when a design is printed to PDF.

SCALE: 1 in 3354	 T3RRA Unit 4, 18 Rocla Court Toowoomba, QLD Australia PHONE +61 415 960 739	CLIENT: Everyone	DESCRIPTION: We
SURVEYED: T3RRA DESIGNED: None CHECKED: T3RRA		PROJECT: Manual Updates	

Cause:

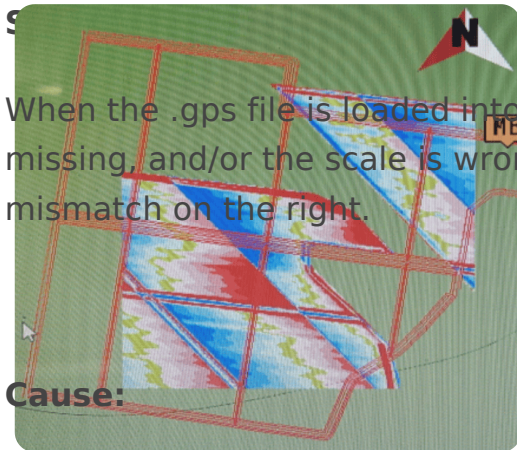
Using a custom Print to PDF tool. For example, Foxit PDF Printer.

Solutions:

Use the built in “Microsoft Print to PDF” printer. This one is free and provided with Windows.

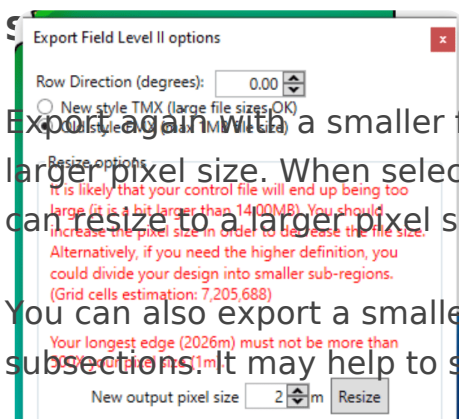
SCALE: 1 in 3354	 Unit 4, 18 Rocla Court Toowoomba, QLD Australia PHONE +61 415 960 739	CLIENT: Everyone	DESCRIPTION: We
SURVEYED: T3RRA DESIGNED: None CHECKED: T3RRA		PROJECT: Manual Updates	

Export to *.gps control file does not load/display properly



When the .gps file is loaded into the display, the map is in the wrong place, part of it is missing, and/or the scale is wrong. For example, note the linework to surface mismatch on the right.

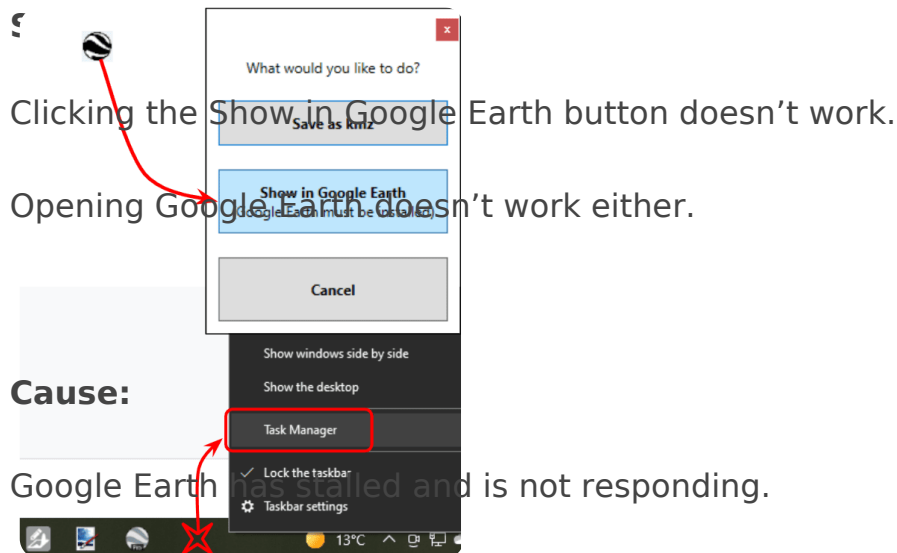
Trimble FMX and TMX displays can only display a certain size file. *.gps files larger than 1MB or with too many pixels will not load correctly in FMX displays due to memory limitations.



Export again with a smaller file size. This can be done during export by simplifying to a larger pixel size. When selecting FMX, the limitations are more clearly shown, and you can resize to a larger pixel size in the export dialog:

You can also export a smaller size without increasing pixel size if you split the field into subsections. It may help to still have some overlap.

View in Google Earth, does not open

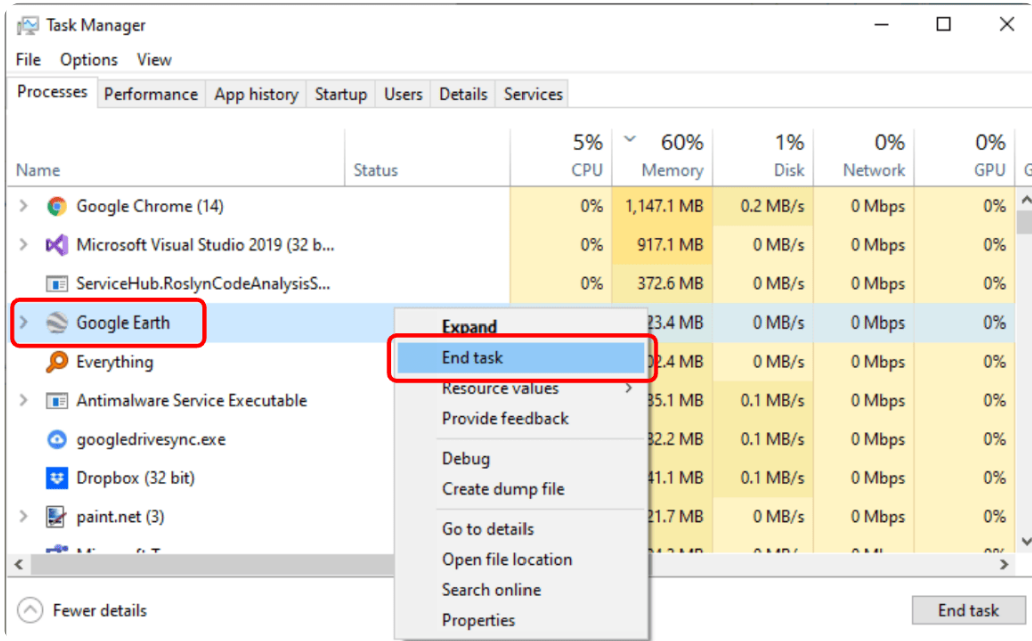


Solutions:

Restart your computer.

To avoid having to restart your computer, open Task Manager by right-clicking a blank part of the taskbar (usually at the bottom of the screen) and selecting Task Manager.

Then, under the Processes tab, right-click on Google Earth and choose End task. Then Google Earth should start up successfully the next time you try.



Export to *.gps control file is too far from benchmark

Symptoms:

When the .gps file is loaded into the display, the system complains that the field is too far from the benchmark.

Cause:

When the previous design's field is left selected in the display, it will try to use the previous benchmark, which may be too far away.

Solutions:

Select the correct Client, Farm, and Field. You may need to create a new field to load the design into.

