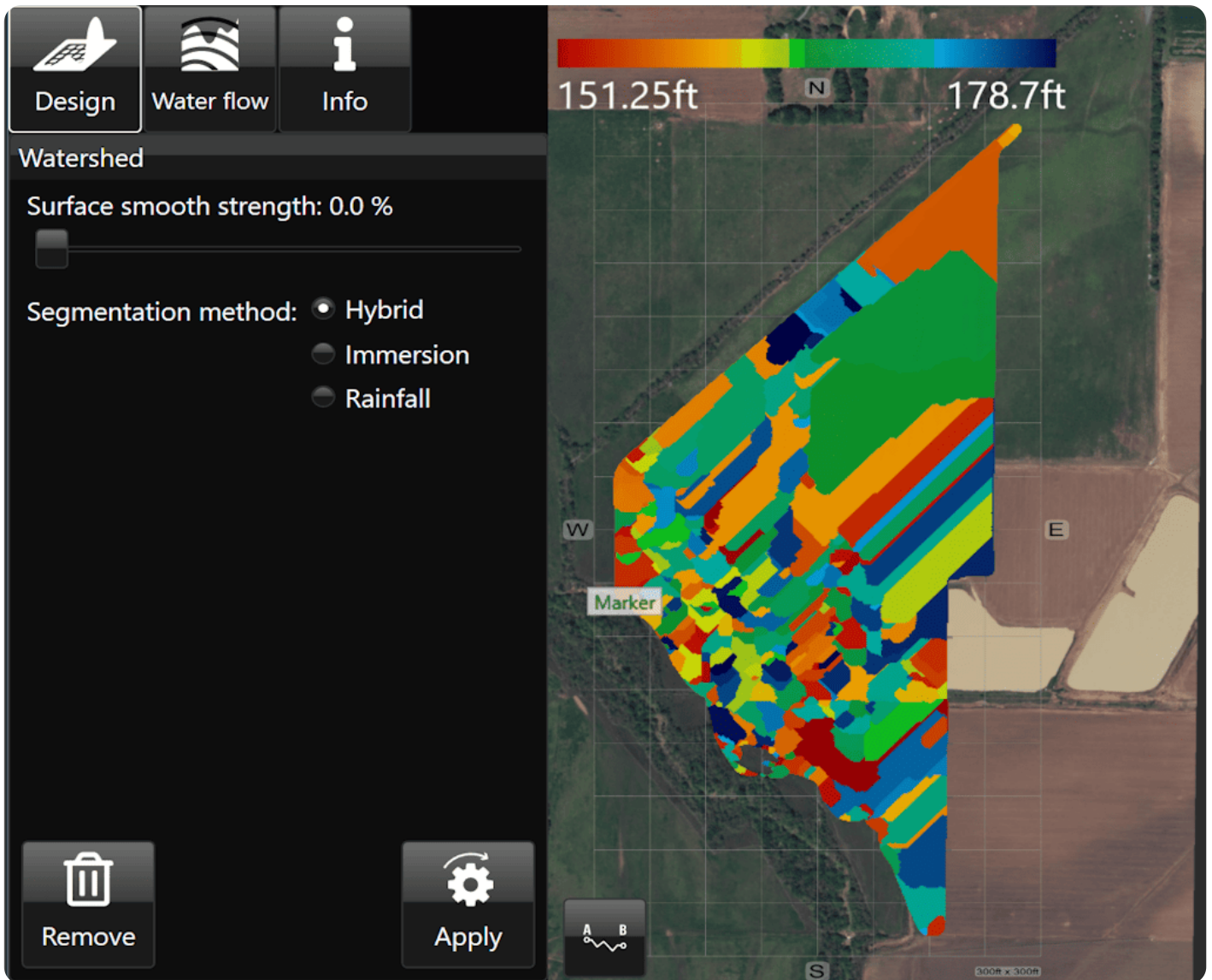


Watershed



The Watershed tool identifies the areas of the surface that will flow together to the same exit point on a field. The working area will display the surface in a patchwork of colors, these indicate your watersheds and what will flow out where. The specific colors do not matter, they are only to help identify individual watersheds.

- ‘Surface smooth strength’ provides control to adjust the level of detail on the surface.
- ‘Segmentation method’ will select a general water event to display watersheds. The options are:
 - Hybrid - Immersion and Rainfall event happening simultaneously.
 - Immersion - submersion of the surface by water as it engulfs the area as in a flooding event.
 - Rainfall- a fall or shower of rain.



Here is a video on the [Watershed Tool](#).