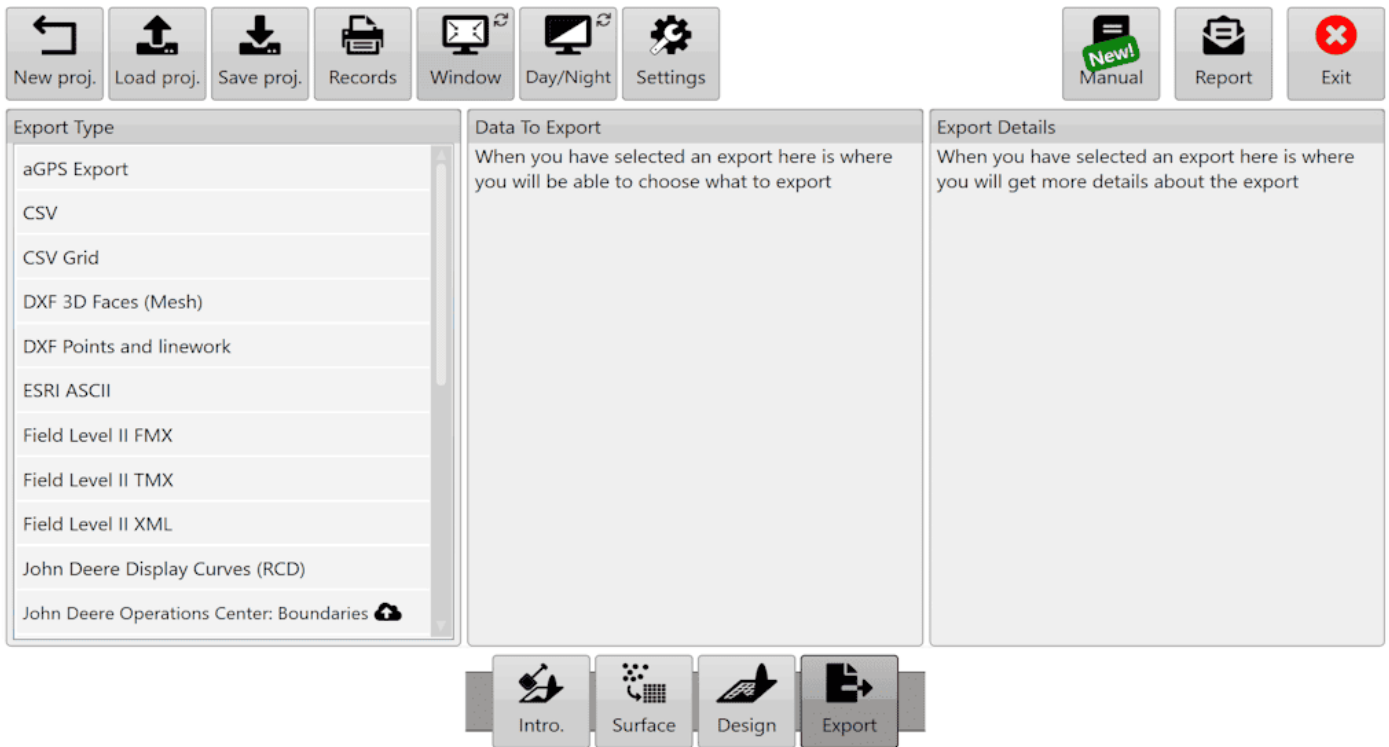
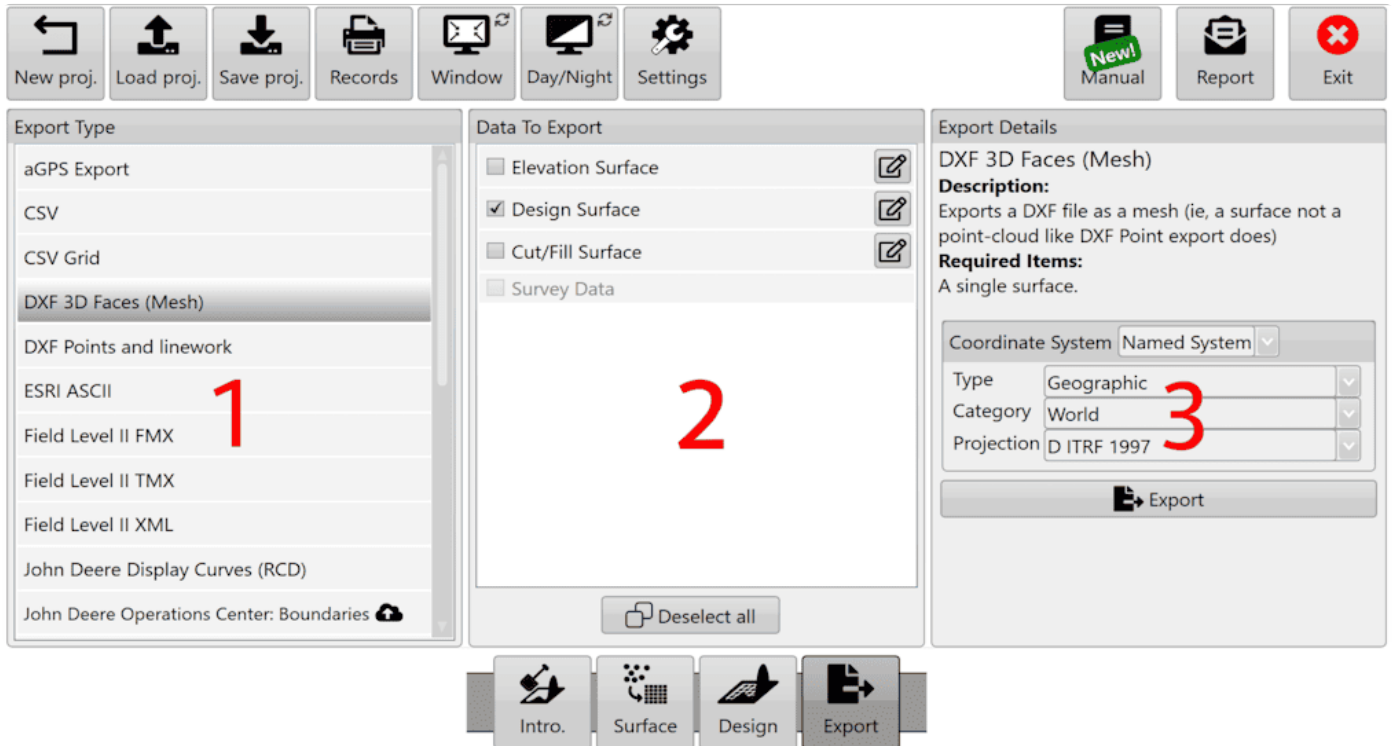


Exporting Data



Exporting allows data to be transferred to other programs. If you're wanting to work within T3RRA, click the ["Save Proj"](#) button at the top of the screen - it is far easier to work with this format than exporting and then re-importing the data.



Steps to export data

- 1. Select the export format you want on the left.**
- 2. Choose the data you wish to export. Clicking the button will allow you to change how the layer is exported (say if you wished to export a design surface as an elevation).**
- 3. Provide any additional information required (such as which projection you need) and click “Export”.**

Here is a video on [Exporting Data.](#)