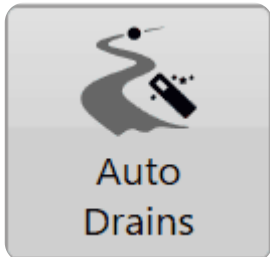


Auto-Drains Design

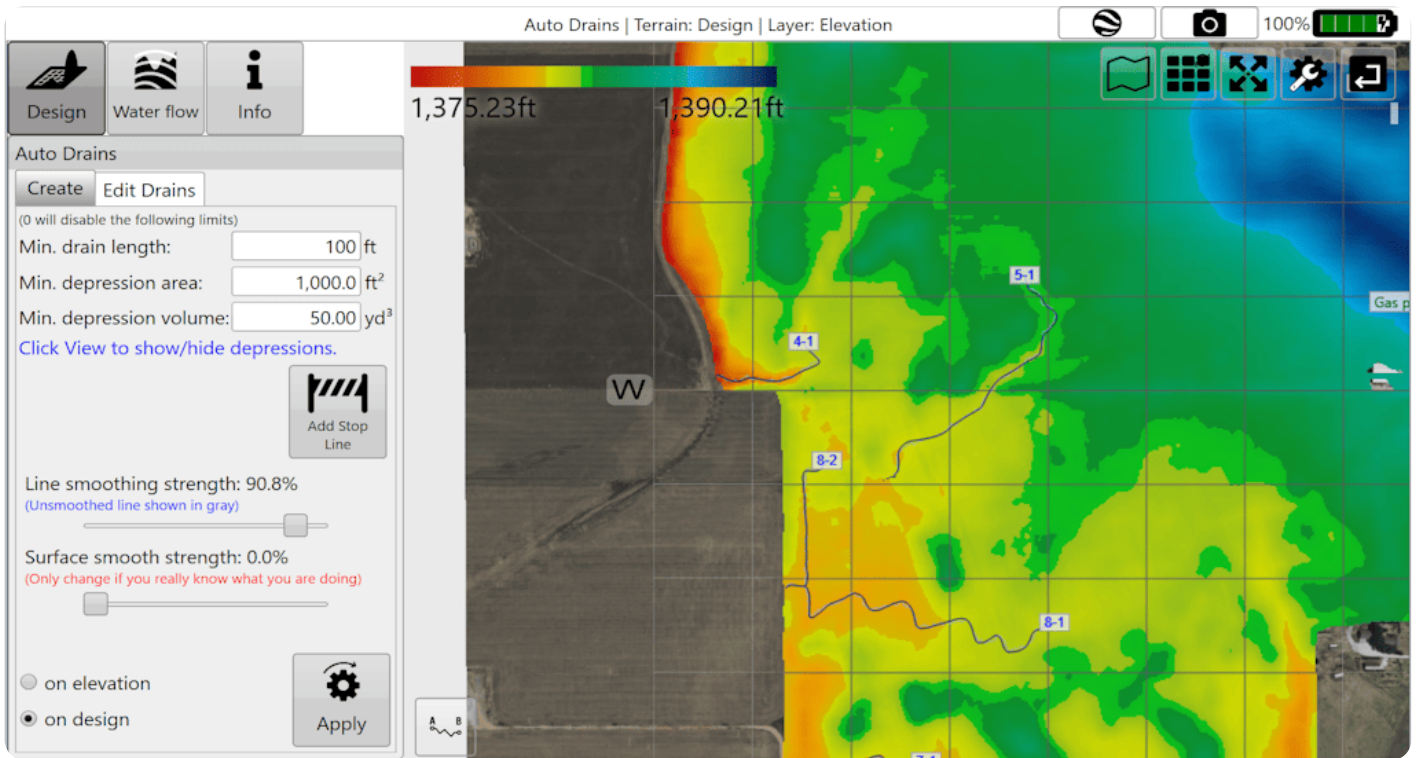


You can use Auto-Drains to automatically generate drain paths for wet areas in your field. It will calculate optimal ditch lines to drain depressions.

There are two tab pages present in Auto-Drains:

- 1. 'Create' controls the parameters that must be met before drains are applied to the surface.**
- 2. 'Edit Drains' allows for editing of the drain paths.**

'Create'



'Edit'

