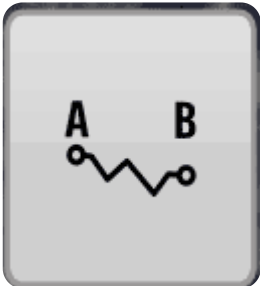
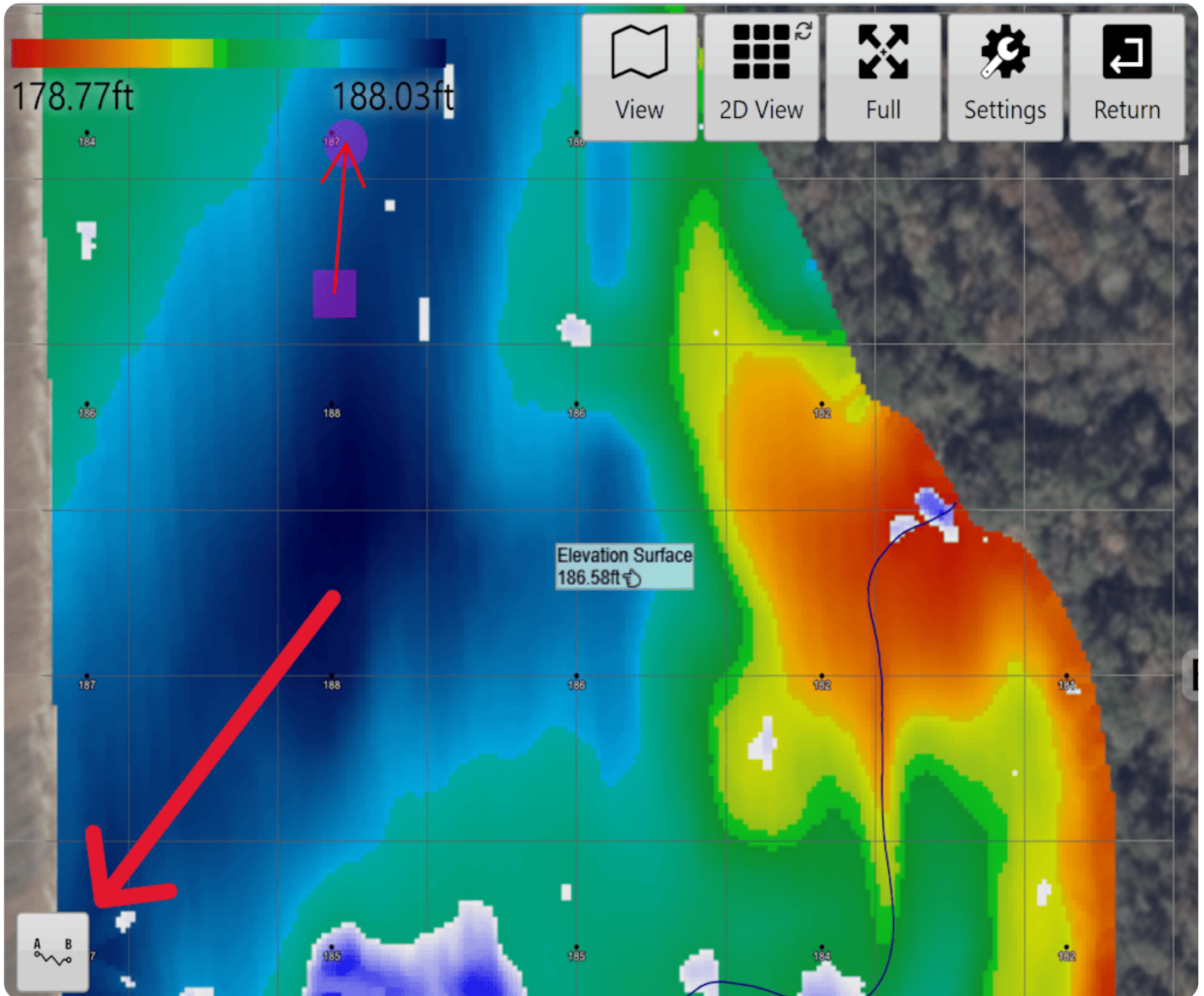
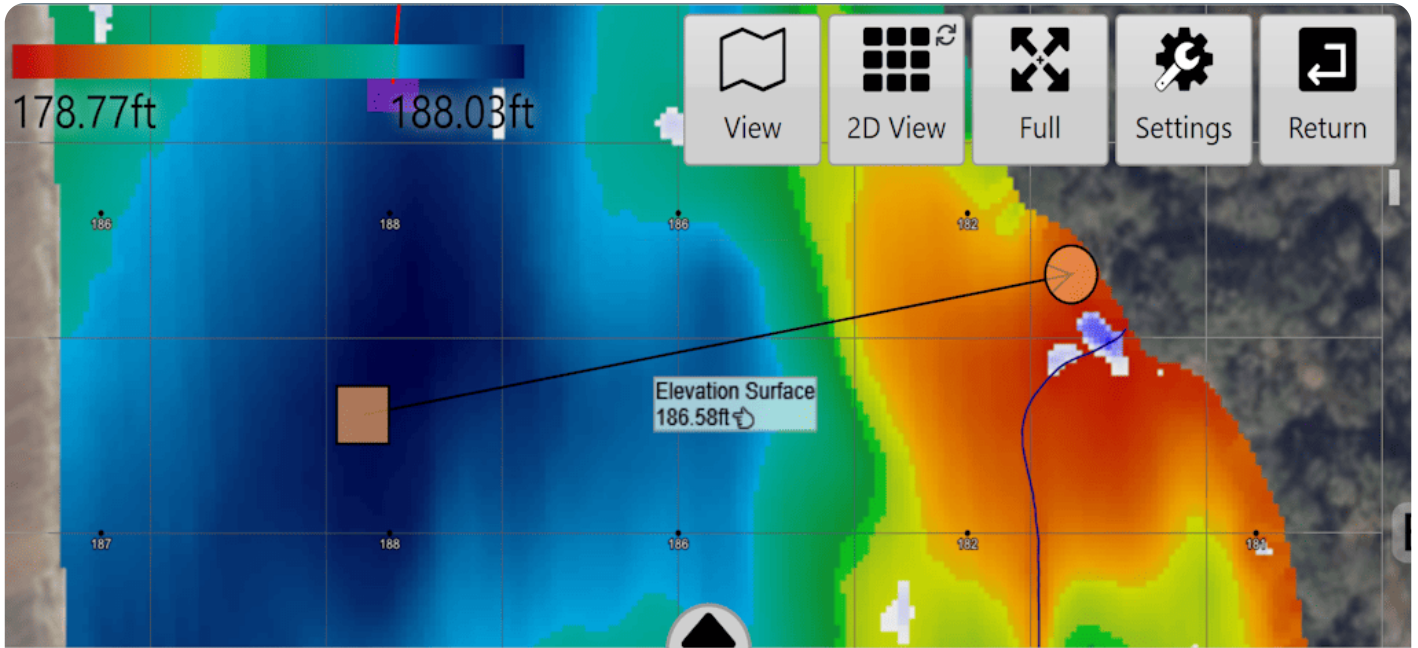


AB Profile Tool

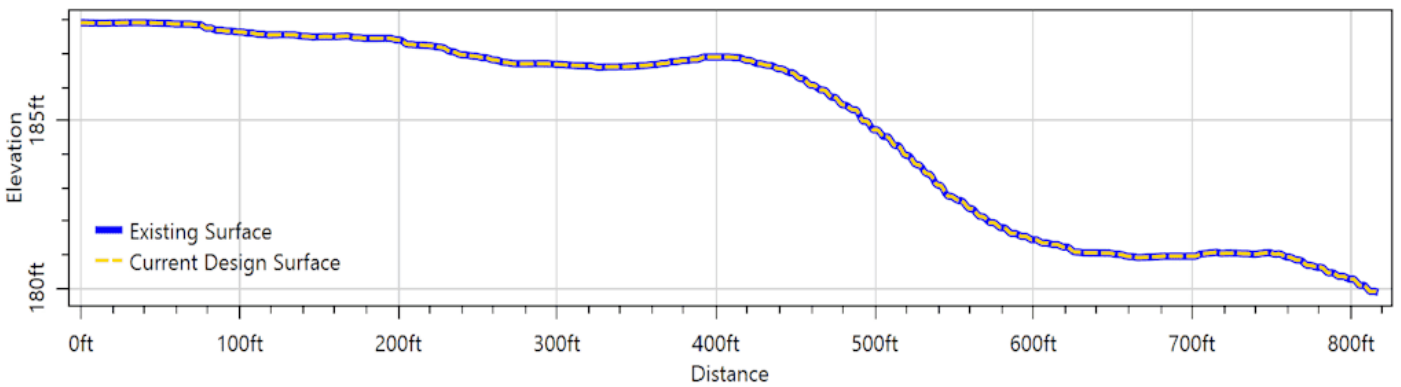


AB Profile Tool - In the Design step of T3RRA Cutta Desktop, the AB Profile Tool allows the user to draw an AB line anywhere on the surface and view the side profile of the elevation between the two nodes. Access the tool using the icon above in the bottom left corner of the map. The square node is the "anchor" and point "A" and will represent the left hand side of the graph, and the round node can be moved to extend the line and set the "B" point representing the far right of the graph. Use this tool to get a better visual representation of the slope anywhere on the surface.





Length: ft Elevation Slope: 0.99%
Heading: ° Design Slope: 0.99%



Here is a video on the [AB Profile Tool](#).