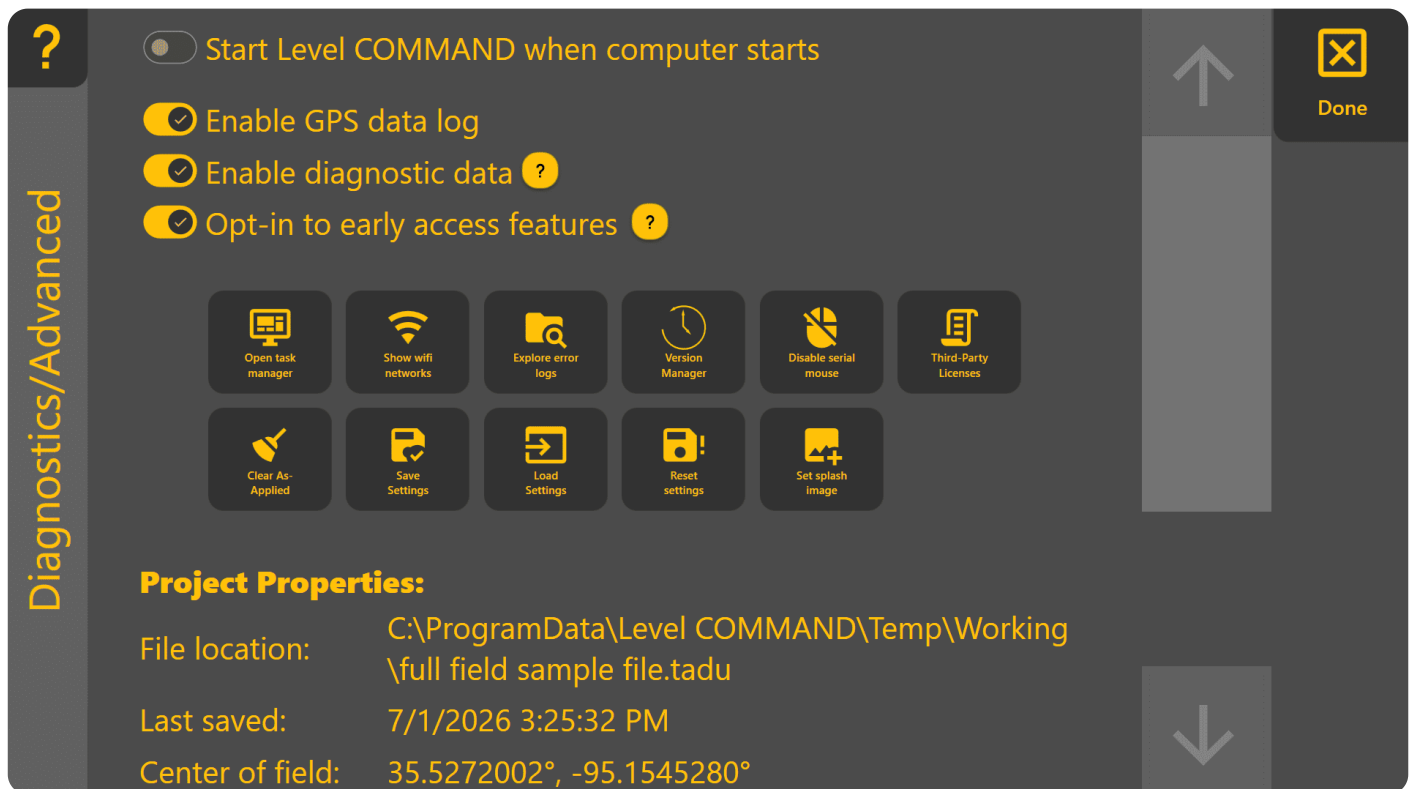


7.7 | Diagnostics / Advanced

The **Diagnostics & Advanced** page provides access to advanced application settings, diagnostic tools and project information.

To open this page, press **More** → **Diagnostics / Advanced**.



Most options on this page are intended for dealers, advanced users or troubleshooting with the assistance of **T3RRA Support**. Unless instructed otherwise, the default settings are recommended.

Application Settings

Several application behaviours can be configured from this page, including:

- **Start Level COMMAND when the computer starts** – Automatically launches Level COMMAND when Windows starts.

- **Enable GPS Data Log** – Records GNSS data for later analysis and troubleshooting.
- **Enable Diagnostic Data** – Collects diagnostic information that can assist T3RRA with investigating software or system issues.
- **Opt-in to Early Access Features** – Enables access to preview features before they are included in a standard software release.

Project Information

The lower section of the page displays useful information about the currently loaded project, including:

- Project file location.
- Last saved date and time.
- Project centre location.
- Additional project properties.

This information can be useful when locating project files or assisting with technical support.

Diagnostic Tools

Additional utilities are available for advanced troubleshooting and system maintenance, including:

- Saving and restoring application settings.
- Resetting application settings.
- Managing installed software versions.
- Viewing diagnostic logs.
- Clearing **As Applied** data.
- Setting a custom splash image.
- Other maintenance and support tools.

These functions are typically used only during commissioning or when troubleshooting with T3RRA Support.

Look Ahead

The **Look Ahead** value can also be adjusted from this page.

Look Ahead compensates for the delay between calculating a control command and the machine responding hydraulically. Correct adjustment can improve grading performance, particularly at

higher operating speeds.

This setting should normally remain at its default value unless tuning is being performed by an experienced dealer or under the guidance of T3RRA Support.

For more information, refer to **6.7 | Predictive Control & Look Ahead**.

Operator Tip: The default settings on the **Diagnostics & Advanced** page are suitable for almost all installations. If a change is made while troubleshooting, record the original value so it can be restored if required.
